



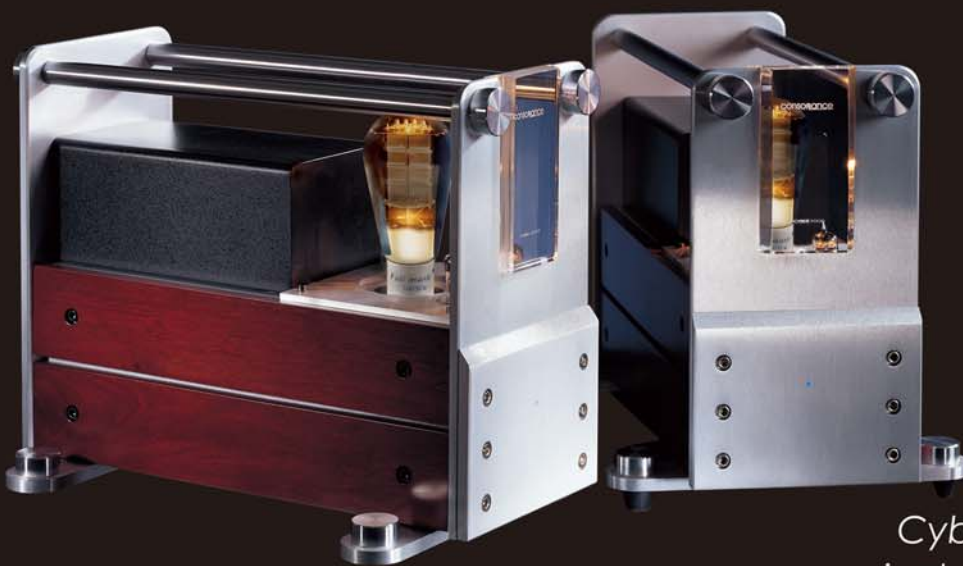
consonance

Stylist Series - Cyber 300B

thought out TJ/Full music 300B



*Cyber 300BPSE / Cyber 300BD
single ended in parallel / push-pull*



*Cyber 300B
single ended*

Cyber 300B series mono block power amplifier



SPECIFICATIONS

	300B	300BD	300BPSE
Control functions	Power On/Off	Power On/Off	Power On/Off
Power output	10 watt, RMS 1kHz	20 watt, RMS 1kHz	15 watt, RMS 1kHz
Total harmonic distortion	less than 1% (5 watt, 1kHz)	less than 1% (5 watt, 1kHz)	less than 1% (7 watt, 1kHz)
Frequency Response	5Hz - 50kHz (-3dB)	2Hz - 50kHz (-3dB)	5Hz - 60kHz (-3dB)
Input sensitivity	1.35V	0.8V	0.5V
Input impedance	100k ohms	100k ohms	100k ohms
Output	4 ohms, 8 ohms	4 ohms, 8 ohms	4 ohms, 8 ohms
Signal / noise	90dB	90dB	90dB
Consumption	90 watt x 2	100 watt x 2	100 watt x 2
Input interfaces	1 group (RCA)	1 group (RCA)	1 group (RCA)
Overall negative feedback	None	-3dB	None
Vacuum tube	5AR4 x 2 6C45P x 2 300B x 2	5R4 x2, 5687 x 2 E88CC x 2 300B x 4	5R4 x2, 5687 x 2 E88CC x 2 300B x 4
Dimensions	412 x220x166 (LxWxH)mm x 2	412 x220x166 (LxWxH)mm x 2	412 x220x166 (LxWxH)mm x 2
Weight	30kg x 2 (packed)	30kg x 2 (packed)	30kg x 2 (packed)

COLOR OPTION

Cherry wood



Dull red wood



Aluminium black

